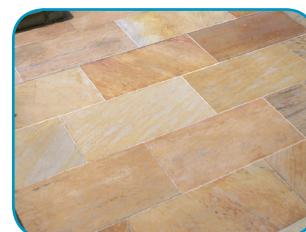
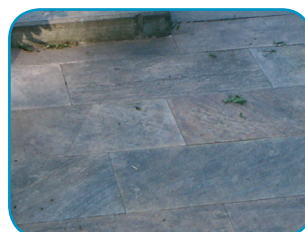


Finalit No. 9

Lime and Cement Bloom Remover

- removal of lime and cement bloom residues
- removal of lime, salt and gypsum efflorescence
- removal of aluminium oxide efflorescence

- excellent acidic basic cleaner
- pH-value: < 2
- dilutable with water up to 1:20
- 1L cleans up to 80m², depending on the degree of soiling



1) The product – Finalit No. 9 Lime and Cement Bloom Remover



a) Materials

Finalit No. 9 Lime and Cement Bloom Remover is suitable for granite, sand stone, natural stone, marble, Solnhofen stone, lime stone, terracotta, clinker, brick, stoneware, ceramic, terrazzo, concrete.

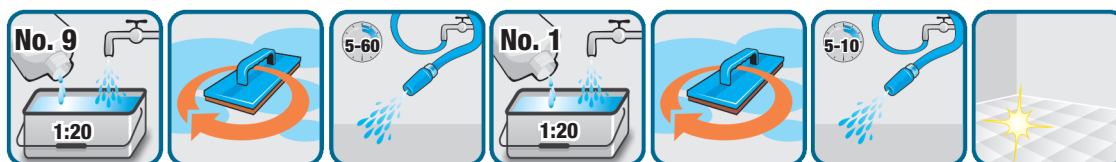
Attention: Finalit No. 9 Lime and Cement Bloom Remover may have a caustic effect on soft stones such as marble, limestone, sandstone, terrazzo, etc... Preceding tests recommended!

BEFORE STARTING TO WORK

- Take pictures of damages caused by daily cleaning and use of the premises, starting at the door, running clockwise.
- The bottom of wooden pieces of furniture (e.g. door frames) must be siliconed with transparent silicone, otherwise it may be damaged by water or detergent. Use special acid-resistant plastic tapes that do not cause adhesive residues!
- Already existing coatings have to be removed completely with Finalit No. 5 Coating Remover or with a low-odor mixture of Finalit No. 1 Intensive Cleaner, No. 5 Coating Remover and No. 39 Compact (1:1:1) before working on the stain removal. Otherwise the cleaners cannot work effectively! Sometimes coatings are not visible. Perform tests with a) a blade („scrape“) or b) spill water - if the water drips off, the surface is coated.
- Switch off floor heating systems!

This product is **acidic** and therefore needs **neutralization** with Finalit No. 1 Intensive Cleaner after the treatment. If acid is applied to walls (“acid-washed“), the surface must be moistened with water. The acid has to be applied **FROM THE BOTTOM TO THE TOP**. If it is applied the other way round, etched areas can only be removed by grinding.

b) Application



- dampen the surface that has to be treated
- Finalit No. 9 Lime and Cement Bloom Remover can be diluted with water up to 1:20, depending on the degree of soiling
- apply, rub in with a brown pad, single disc machine or brush
- let set for 5-60 minutes (depending on the degree of soiling), then rinse with water thoroughly
- **neutralization:** apply Finalit No. 1 Intensive Cleaner (diluted with water at a 1:20 ratio)
- let set for about 5-10 minutes (for strong absorbent materials repeat the procedure 3-5 times)
- rinse with water thoroughly

Application for particularly stubborn stains

- **Attention:** closed and thick layers of lime need to be roughened with a brush or sandpaper before applying the product
- apply Finalit No. 9 Lime and Cement Bloom Remover undiluted with a brush and rub in the product

- let set for 5-60 minutes (depending on the degree of soiling), afterwards brush off the product with a rough brush
- rinse with water thoroughly
- **neutralization:** apply Finalit No. 1 Intensive Cleaner (diluted with water at a 1:20 ratio)
- let set for 5-10 minutes
- rinse with water thoroughly
- attention with fittings or metals - they need to be covered

Recommendation for daily care:

Finalit No. 40 Citrus Scent Cleaner – pH neutral, suitable for all surfaces!

2) Pro tips for Finalit No. 9 Lime and Cement Bloom Remover



a) Efflorescence on stoneware

Lime, salt, gypsum and aluminium oxide efflorescence or greyish stains from dispersants or adhesives (caused by acid rain) can easily be removed by using Finalit No. 9 Lime and Cement Bloom Remover.

b) Efflorescence on terrazzo slabs

Terrazzo slabs are often vacuum-packed and stored. Condensation water can form and cause efflorescence of lime, salt and gypsum. Depending on the cutting of the slabs the stains occur in the middle or along the edges. These stains can easily be removed by using Finalit No. 9 Lime and Cement Bloom Remover, a single disc machine and Quartz Sand 0.1-0.5 mm (spread on the areas that have to be treated).

A thin layer of lime can be removed with a blade (mechanical removal).

Alternative: steel wool 00 ("double zero") in order to prevent damages on polished marble.

c) Grout residues

If highly absorbent stone is grouted on days with high outdoor temperatures the drying process is accelerated and in most cases the grout leaves residues. They can be removed with Finalit No. 9 Lime and Cement Bloom Remover, diluted with water at a 1:5 ratio, a single disc machine, Quartz Sand 0.1-1.0 mm (spread on the areas that have to be treated) and water.

3) Specification



Appearance	fluid, colorless
pH value	< 2
Packaging	0,25L, 1L, 5L, 25L plastic container
Storage	Protect from frost. Recommended shelf life: 1 year after opening.

4) Security regulations



The common precautions when handling chemicals must be observed. Ensure good ventilation/extraction at the workplace. Prevent formation of aerosols. Keep away from food, beverages and animal feed. Remove soiled and contaminated clothing immediately. Wash your hands before breaks and when work is finished. Avoid any contact with eyes and skin. **ATTENTION CORROSIVE!**

5) Note



This product information is based on careful laboratory tests and extensive practical experience. These are informal details. We recommend to determine whether the product meets the respective needs by sufficient testing. Our company shall not be held responsible for damages resulting from improper use of the product.